

# Logicube Echo Plus™ Software Updating Instructions

## Important Notes Regarding Software Versions

---

When downloading software for the Echo Plus, it is important to download the correct version. The color of the display on the Echo Plus will determine the version of the software to download.

1. If the color of the display has blue letters, download software version 2.6.
2. If the color of the display has green or orange letters, download software version 2.5.

## Software Loading

---

Loading or updating software for the Echo Plus comes in four sections:

- Installing VCP Controller and drivers from the Echo Plus CD-ROM.
- Attaching the Echo Plus to the PC
- Determining the COM Port for the Echo Plus
- Configuring Hyperterminal or other third party terminal program to communicate with the Echo Plus and installing/loading the software to the Echo Plus

## Installing the VCP Controller Software and drivers

---

### Windows 7/Vista

1. Insert the Echo Plus CD-ROM in the PC. If the installation wizard automatically comes up, cancel it. Browse the contents of the CD-ROM and go into the **X:\Windows Vista & 7\USB3410 Single Driver Installer v3.3** folder (where X:\ is the drive letter for the CD-ROM).

**NOTE:** If your CD-ROM does not have the Windows Vista & 7 folder, you can download the Windows Vista and 7 drivers from Logicube's website.

2. Run the **Setup.exe** file from the folder above.
3. Accept the License Agreement and continue the rest of the installation.

4. After the installation, browse to **C:\Program Files\Texas Instruments Inc\TUSB3410 Single Driver Installer** (for Windows Vista/7 32-bit) or **C:\Program Files (X86)\Texas Instruments Inc\TUSB3410 Single Driver Installer** (for Windows Vista/7 64-bit) and run **Setup.exe**.
5. Accept the License agreement and continue with the rest of the installation.
6. The VCP Controller and drivers will automatically install on your PC. Click **Finish** when the installation has finished.

### **Windows 2000/XP**

1. Insert the Echo Plus CD-ROM in the PC. The installation wizard should automatically come up. If not, run Setup.exe from the root of the CD-ROM.
2. Accept the License Agreement and continue the rest of the installation.
3. You may get a prompt warning you that the program was not validated by Microsoft. Select **CONTINUE ANYWAY** to move on.
4. The VCP Controller and drivers will automatically install on your PC. Click **Finish** when the installation has finished.

### **Windows 98/ME**

1. Insert the Echo Plus CD-ROM in the PC. Run Setup.exe from the "Windows 9x Driver" folder of the CD-ROM.
2. Accept the License Agreement and continue. The VCP Controller and drivers will automatically install on your PC. Click **Finish** when the installation has finished.

## **Attaching the Echo Plus to the PC**

---

### **Windows 98 / ME / 2000 / XP / Vista / 7**

1. Power the Echo Plus and wait for the Main Screen.
2. Attach the USB cable to the Echo Plus and the PC.
3. The PC will automatically detect the Echo Plus and bring up an "Add new Hardware" Wizard.

- a. If you are running Windows 98/ME, the wizard may ask for the location of the USB drivers. Point it to the following path:

**C:\Program Files\Texas Instruments\TI34109**

- b. If you are running Windows 2000/XP/Vista/7 the wizard will automatically install the right drivers.

**NOTE:** You may get a prompt warning you that the program was not validated by Microsoft. Select **Continue Anyway** to move on.

4. This will allow Windows to see the Echo Plus properly and assign a COM Port to it.

**NOTE:** Keep the Echo Plus powered on and connected to the PC until instructed otherwise.

## **Determining the COM Port for the Echo Plus**

---

The easiest way to determine the assigned COM Port for the Echo Plus is to look at Device Manager. There are several different ways to access Device Manager, depending on the Operating System. Depending on your Operating System, Listed below are the ways to access Device Manager.

**NOTE:** The Echo Plus must be powered on and connected to the PC for the COM Port to be seen.

### **For Windows 7:**

Click **Start** then click **Control Panel**. Click either **Device Manager** or **System and Security**, then **Device Manager** (in the System section).

### **For Windows Vista:**

Click **Start** then click **Control Panel**. Click either **Device Manager** or **System and Maintenance**, then **Device Manager**.

### **For Windows XP:**

Click **Start** then click **Control Panel**. Click either **System** or **Performance and Maintenance**, then **System**. Click the **Hardware Tab** then click the **Device Manager** button.

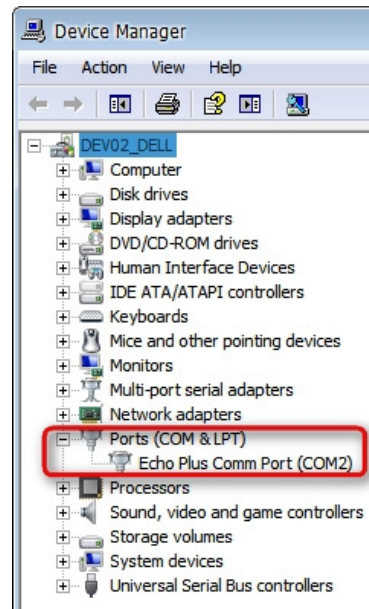
### **For Windows 2000:**

Click **Start**, point to **Settings**, then click **Control Panel**. Double-click the **System** icon. Click the **Hardware** tab. Click the **Device Manager** button.

### **Windows 98/Me:**

Click **Start**, point to **Settings**, then click **Control Panel**. Double-click the **System** icon. Click the **Device Manager** tab.

Once Device Manager is open, expand the section labeled **Ports (COM & LPT)**. The Echo Plus will appear next to the correct COM Port.



## Configuring Hyperterminal or other third party terminal program and installing the software

Hyperterminal comes installed with Windows 98, ME, 2000, and XP. If you are using Windows Vista or 7 you will need to download a third party terminal program.

Before continuing, follow these steps to prepare the Echo Plus for the software update:

1. Disconnect the AC adapter from the Echo Plus. Keep the USB cable attached between the Echo Plus and the PC.
2. Press and hold the **START/STOP** button while re-connecting the AC adapter to the Echo Plus.

**NOTE:** If the color of the display on your Echo Plus is green or orange you will see 'Software Load. Press Select to Start'. If the color of the display on your Echo Plus is blue you will see a pixelated screen (several pixels will be lit up, but no letters or words will be seen). **DO NOT PRESS THE SELECT BUTTON YET.**

## Windows Vista/7

Windows Vista and 7 do not have a built-in program that will allow us to connect with the Echo Plus. A third party program must be used. In these instructions, we will use Tera Term.

1. Download Tera Term from [www.logmett.com](http://www.logmett.com).
2. Install the software using the default settings except on the fourth screen. Change the selection from "Standard Installation" to "Compact Installation".
3. When the installation has finished, run Tera Term from your Start menu. The 'New connection' window will appear. Click the **Cancel** button.
4. From the menu system, click **Setup** then **Serial port...** The serial port setup window will appear.
5. Set the following settings then click **OK**:
  - a. Port: Use the COM Port the Echo Plus is assigned to
  - b. Baud rate: 115200
  - c. Data: 8
  - d. Parity: none
  - e. Stop: 1 bit
  - f. Flow control: none
6. From the menu system, click **File** then go to **Transfer** then **XMODEM** then **Send...**
7. Browse to the folder where you extracted/unzipped the soli.h86 file and select the sol8.h86 file. **DO NOT click OK yet.**
8. On the Echo Plus, press the **SELECT** button.
9. On the PC, make sure at the bottom of the window **checksum** is selected. Click **OK**.
10. A progress window will appear and you should see the number of packets, bytes transferred, and percentage count upwards. When the process is complete, the progress window will disappear and you can close Tera Term.
11. Disconnect the AC adapter from the Echo Plus then reconnect it back. The Echo Plus will boot up and display the current version of the software during the boot process.

### Windows 98/ME/2000/XP

1. Go to Start - Programs - Accessories - Communication - Hyperterminal.
2. Choose "File - New Connection" or follow the connection wizard if it comes up automatically.
3. Name the Connection "Echo Plus" and choose an icon.
4. In the next screen, choose the COM Port assigned to the Echo Plus. You can also refer back to Windows Device Manager to determine the correct port.
5. In the next screen, set Bits Per Second: 115200, Data Bits: 8, Parity: None, Stop Bits: 1 and Flow Control: None. Click **OK** when finished.
6. In the menu system, click **Transfer** then **Send File...** The 'Send File window will come up.
7. Browse to the folder where you extracted/unzipped the soli.h86 file. **DO NOT click Send yet.**
8. On the Echo Plus, press the **SELECT** button.
9. On the PC, change the Protocol to **1K XMODEM** then click **Send**.
1. Browse to the folder where you put soli.h86. Set "Protocol" to "1K XMODEM" or "XMODEM". Click OK.
2. A progress window will appear and you should see the number of packets count upwards. When the process is complete, the progress window will disappear and you can close Hyperterminal.
3. Disconnect the AC adapter from the Echo Plus then reconnect it back. The Echo Plus will boot up and display the current version of the software during the boot process.